

Powered Therapeutic Mattresses



Amico

Prevention and Treatment Through Therapeutic Surfaces

Pressure ulcers result from prolonged pressure that cuts off the blood supply to the skin, causing the skin and other tissue to die. The damage may occur in as little as 12 hours and may go unnoticed until the skin begins to break down, days later. This is where Amico mattresses play an important role in your decision for ulcer prevention. With the option of air-filled, low-air-loss and alternating air mattresses, pressure relief can be achieved with the use of technology to create dynamic surfaces.

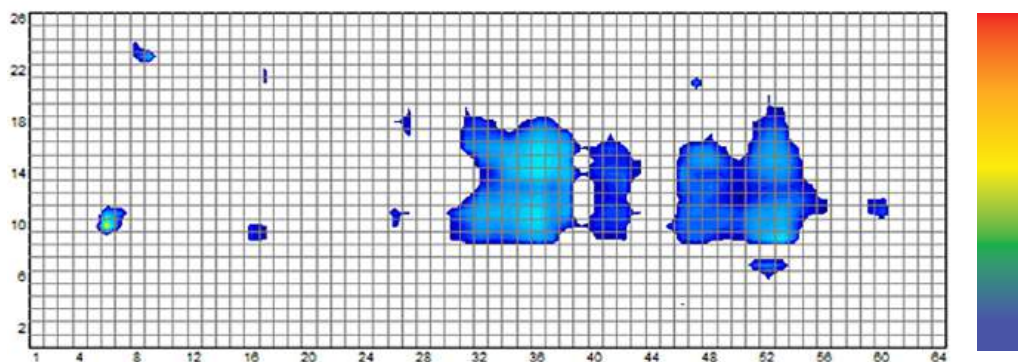


How it Works

- Vented cushions for low air loss therapy preventing moisture build-up
- Pulsation therapy pumps air through mattress at given intervals
- Microclimate management increases air flow and circulation

Areas of Use

- Med-Surg or General Ward
- Intensive Care or Critical Care
- Birthing/Maternity Ward
- Bariatrics



Design and Comfort

- Multi-cell overlay allows for even distribution of patient's weight and maximizes pressure relief
- Anatomical uninterrupted pressure distribution



Caregiver Functionality

- Easy to set up and clean
- Lightweight storage bag with handles allow for easy transport and storage
- User-friendly control panel



Patient Welfare

- Lock-out key prevents tampering of patient settings and power switch
- Accommodates patient weight of up to 350 lbs (160 kg)
- Seat inflation option accommodates patients in the upright position
- Auto firm option inflates all cells, allowing for ease of patient movement



Cover Layer Performance

- Top Layer: Low friction, highly vapor permeable and water resistant urethane coated nylon
- Middle Layer: Unique spacer fabric allows unobstructed airflow throughout the top sheet
- Bottom Layer: A zippered liquid proof layer which prevents any liquids from getting into the mattress base

Technology at its Best

- State-of-the-art micro-controller with real time pressure monitoring sensor technology
- Pump will shut off automatically once desired pressure is obtained
- Holds air in mattress for days during power loss



Technical Specification

Model Number

Model Number

M-AURA-C-APTAL01-80368

Mattress Characteristics

Length	80" (203 cm)
Width	36" (91 cm)
Height	8" (20 cm)
Weight Capacity	350 lbs (160 kg)

Pump Characteristics

Power	110V/60Hz; 220V/50Hz
Air Output	7 - 14 litre/min
Pressure Range	10 mmHg - 50 mmHg
Cycle Time	6/9/12/25 minutes
Pump Dimensions	13.5" (34cm) x 4.5" (11.5 cm) x 7.2" (18.5 cm)

Key Features:

- 350 lbs (160 kg) Weight Capacity
- 80" x 36" x 8" Dimensions
- Alternating Pressure Controls
- Panel Lock
- Seat Inflation
- Auto Firm
- Nylon TPU Cells
- 4-way Stretcher Nylon PU Cover
- Digital Weight and Pressure Displays

Amico Beds Corporation reserves the right to change product specifications without notice.

Amico Beds Corporation | 85 Fulton Way, Richmond Hill, ON L4B 2N4, Canada
600 Prime Place, Hauppauge, NY 11788, USA
Toll Free Tel: 1.877.462.6426 | Tel: 905.764.0800 | Fax: 905.764.0862
Email: info@amico.com | www.amico.com

Represented By: