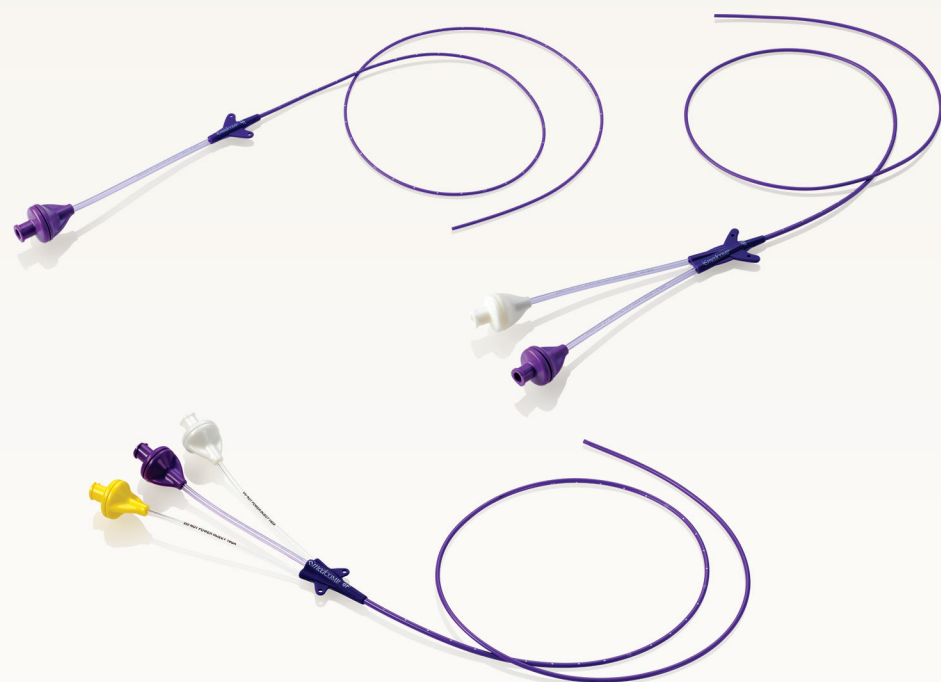


Pro-PICC® Valved Catheter

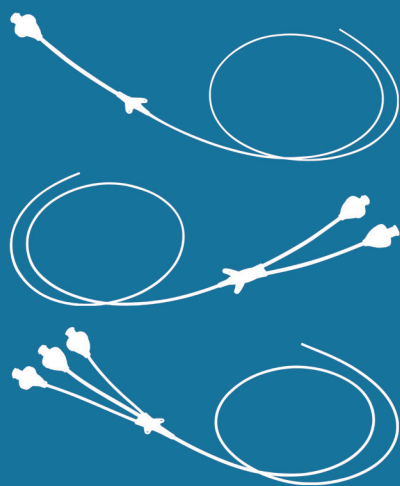
CATALOG #	BASIC SET	UOM
MD82034101	4F X 55CM PRO-PICC® VALVED, SINGLE LUMEN	5/BOX
MD82035101	5F X 60CM PRO-PICC® VALVED, SINGLE LUMEN	5/BOX
MD82035201	5F X 55CM PRO-PICC® VALVED, DOUBLE LUMEN	5/BOX
MD82036301	6F X 60CM PRO-PICC® VALVED, TRIPLE LUMEN	5/BOX

BASIC SET CONTAINS:

- | | | |
|--------------------------------|------------------------------|--------------------------------|
| (1) PICC | (1) 10cc Syringe | (1) Catheter Securement Device |
| (1) Peelable Sheath Introducer | (1) Tape Measure | (1) Patient Information Pack |
| (1) Mini Scalpel | (1) Introducer Needle | (1) Patient Chart Sticker |
| (1) Guidewire | (1 2 3) Needle Free Valve(s) | |



PRO-PICC®
VALVED CATHETERS



 **Medical Components, Inc.**
1499 Delp Dr.
Harleysville, PA 19438, U.S.A.
P: 215.256.4201 F: 215.256.1787
www.medcompnet.com

ISO13485
Certified Quality System

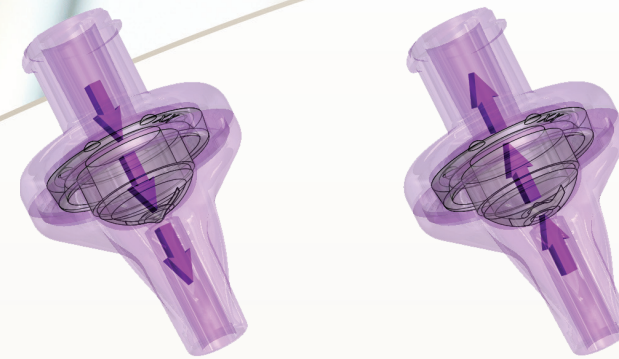
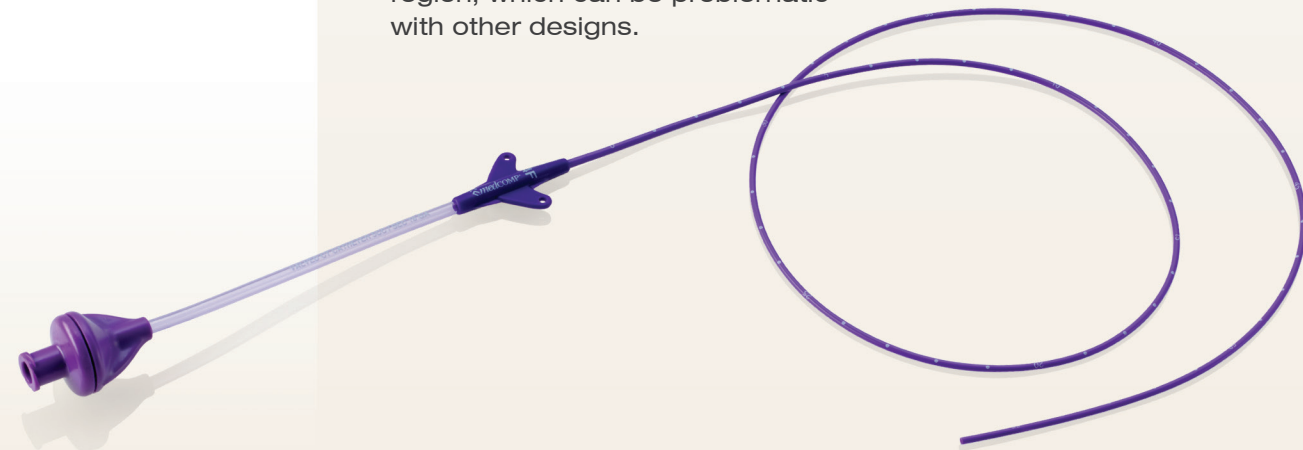
PN2594 Rev. C 10/19



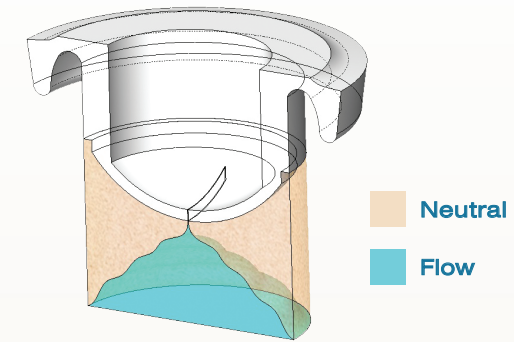
**Prevent
catheter
occlusion &
reduce
costs of care.**

The impact of catheter occlusions and infections can be measured not only by the quantifiable, but emotional costs that result from patient readmissions, additional days of treatment, catheter replacements, and patient discomfort and inconvenience. The incorporation of a proximal valve reduces the reflux of blood into the distal catheter tip after the device has been accessed or flushed, which can reduce the incidence of occlusion and infection. Although reductions in infection as great as 50% have been observed, a valved catheter becomes cost-effective with a reduction in occlusions of just 10% or infection of 1%.⁽¹⁾

In addition, the costs of maintenance are reduced with the ability to eliminate heparin, using a saline-only lock instead. Medcomp's® unique valve design provides an effective solution, which optimizes the performance of the valve by reducing the interior low-flow region, which can be problematic with other designs.



Bi-directional performance enables smooth passage of a wire in either direction as well as ease of aspiration and infusion.



Minimal Low-Flow Regions. Requires less negative pressure for easier blood return while also allowing for a more effective flush.

FEATURES & BENEFITS

- **Clear Valve Identification**
All valved PICCs are clearly labeled on the extensions.
- **CVP Monitoring**
All valved PICCs are indicated for Central Venous Pressure Monitoring.
- **Multiple Kit Configurations**
Available in a variety of kit configurations to accommodate insertion needs.
- **Saline Only Flush**
Limits the potential complications & costs of heparin use.
- **Power Injection Rates**
Achieve maximum injection rates of 5cc/sec at 300psi on all Pro-PICC Valved catheters.
- **Clamp Free Extensions**
Eliminates maintenance challenges associated with needless injection caps.



¹ Hoffer, MD, Eric K., John Borsa, et al. "Prospective Randomized Comparison of Valved Versus Nonvalved Peripherally Inserted Central Vein Catheters." AJR. 173. (1999): 1393-1398. Print.